


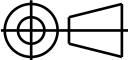
## 2D CAD drawing

# CR\_LC\_TCP\_HOUSING\_TYPE\_A\_DET

CR\_LC\_TCP\_HOUSING\_TYPE\_A\_DET

Approval Process			
	Name	Action	Affiliation
Author	Vauquelin J.	24 May 2018:signed	IO/DG/COO/CIO/DO/CAD
Co-Authors			
Reviewers	Dube V. More V.	25 May 2018:recommended (Fast Track) 29 May 2018:recommended	IO/DG/COO/CST/TAD/ICA IO/DG/COO/CST/TAD/ICA
Previous Versions Reviews	Beaudoire S. Bhardwaj A.	27 Apr 2018:recommended v1.6 18 Apr 2018:recommended v1.6	IO/DG/COO/CIO/DO/CAD IO/DG/COO/CST/TAD/ICA
Approver	Petit P.	31 May 2018:approved	IO/DG/COO/CST/TAD/ICA
Document Security: Internal Use RO: Bhardwaj Anil			
Read Access	LG: TCPH task force team, LG: Cryostat IO team, AD: ITER, AD: External Collaborators, AD: IO_Director-General, AD: EMAB, AD: Auditors, AD: ITER Management Assessor, project administrator, RO, LG: CAD , AD: DA-IN		

<i>Change Log</i>			
<b>CR_LC_TCP_HOUSING_TYPE_A_DET (TELBC6)</b>			
<i><b>Version</b></i>	<i><b>Latest Status</b></i>	<i><b>Issue Date</b></i>	<i><b>Description of Change</b></i>
v1.0	Signed	02 Nov 2016	
v1.1	Signed	24 Nov 2016	Version following Matthias comment about Sealing plane.
v1.2	Signed	20 Jan 2017	Update following INDA comments and upgrades. Update of the RH interface and of its related tolerances.
v1.3	Signed	13 Mar 2017	update following comments
v1.4	Approved	29 Mar 2017	Update of the Pump Holes definition following Matthias Dremel comment
v1.5	Approved	21 Jul 2017	draft version
v1.6	Approved	03 Apr 2018	DR-34: Removal of the Diagnostic penetration
v1.7	Approved	24 May 2018	- addition of tolerances for holes - shifting of the monitoring pipe stubs

ITER ID_TELBC6 v1.7		2	3	4	5	6	7	8		
A										
B										
C										
D										
REV No.	DETAILS OF MODIFICATION			SHEET No.	GRID REF	DATE	DCR No.			
DRW DOC ID		Q4GHVF		RELEASED BY		ITER Organization				
LINKED EV5 PT ID		U2L8RU		APPROVED BY		<div> china EU india japan korea russia USA</div>				
PBS TITLE		Cryostat & VVPSS Cryostat Lower Cylinder		CHECKED BY					BEAUDOS	
REV DATE		24 May 18		PT MATURITY					CD	
SHEET SIZE		420x297		PT Status					D	
THIRD ANGLE PROJECTION				NO. OF SHTS		08		24 CR LC		
DRAWING NUMBER		034445		SHEET		01		-- E		
DRAWING NUMBER		034445		REVISION		-- E		D		

Spacereservation for the banner

Spacereservation for the banner

A

B

C

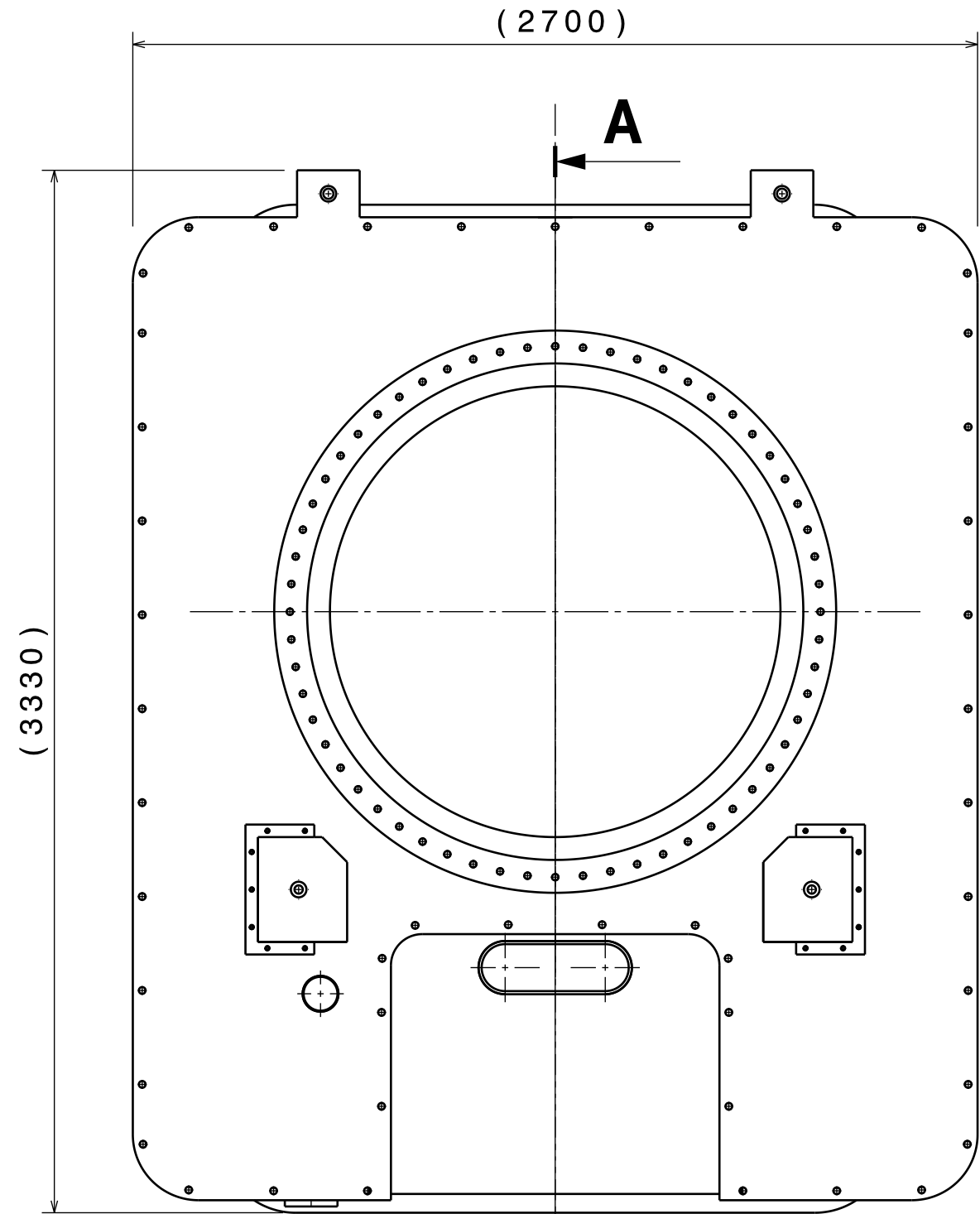
D

E

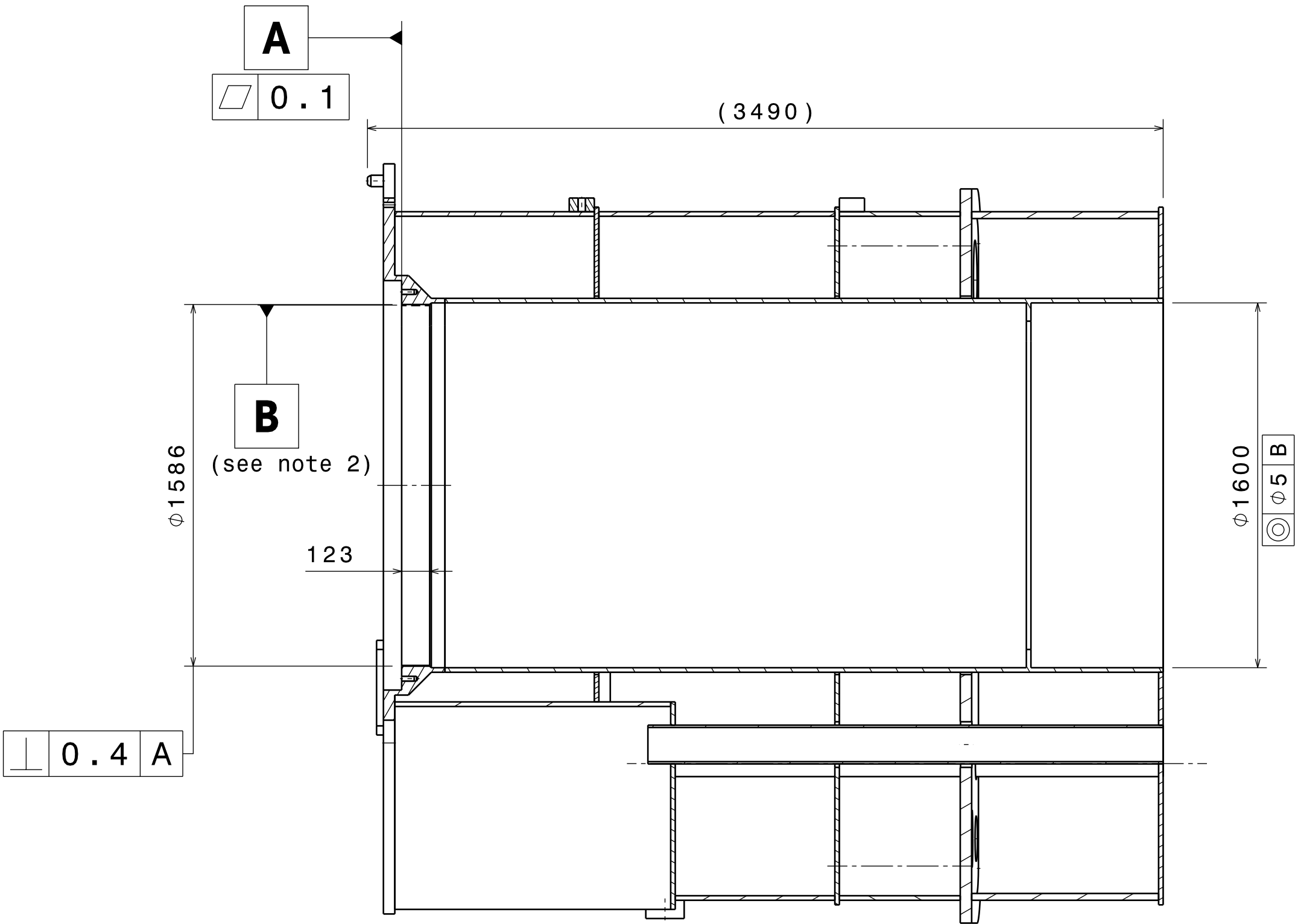
F

G

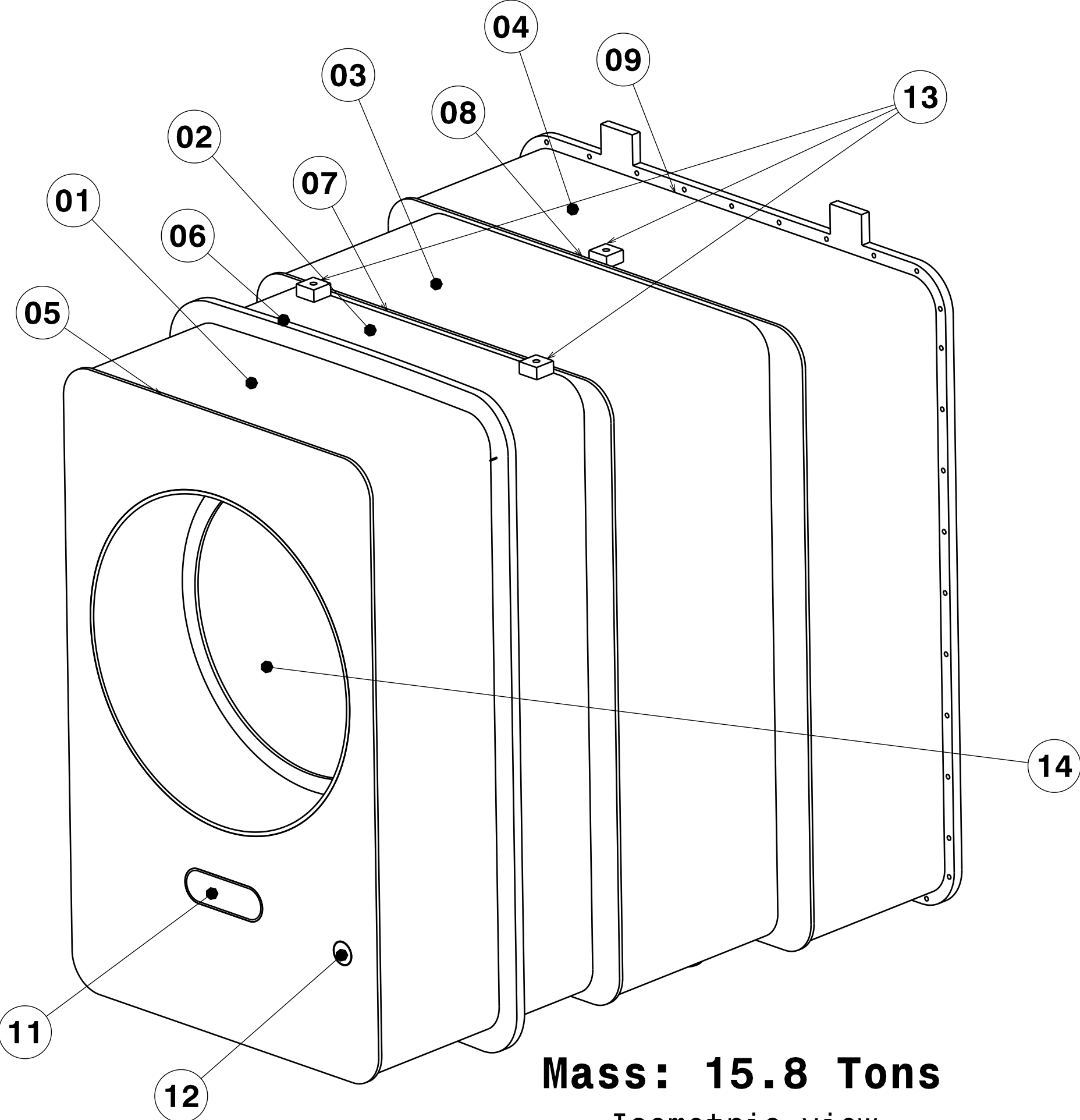
H



Front view



Section view A-A



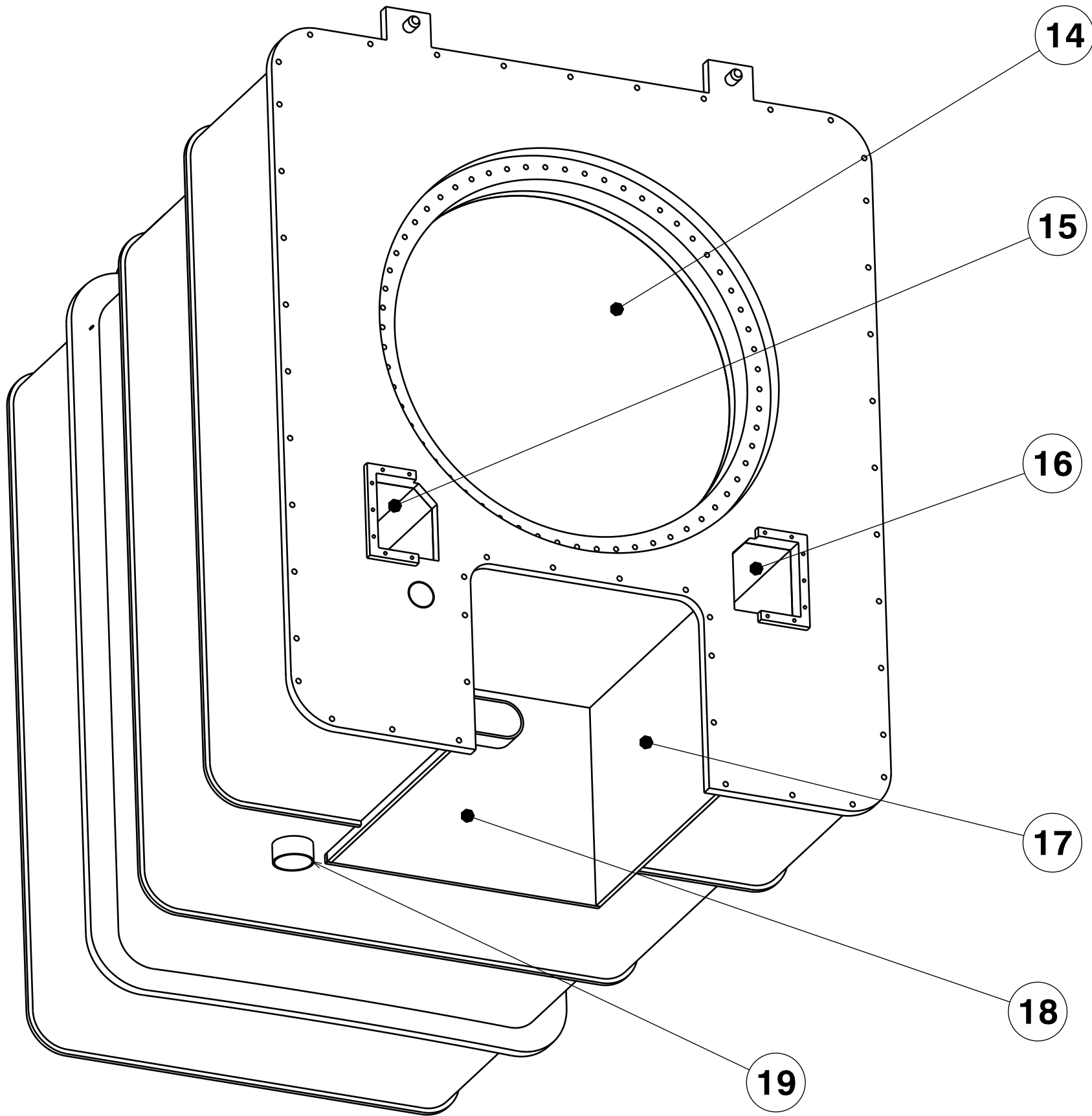
Mass: 15.8 Tons

Isometric view


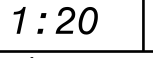
Notes: 1. ISO 2768 - mK tolerances apply for this sheet unless more stringent tolerances are specified.  
ISO 13920-BF to apply for welded parts.  
2. The Datum B applies on machined inner surface of the Flange

Bill of material

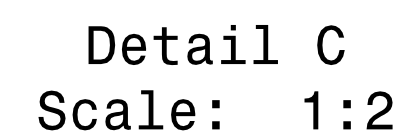
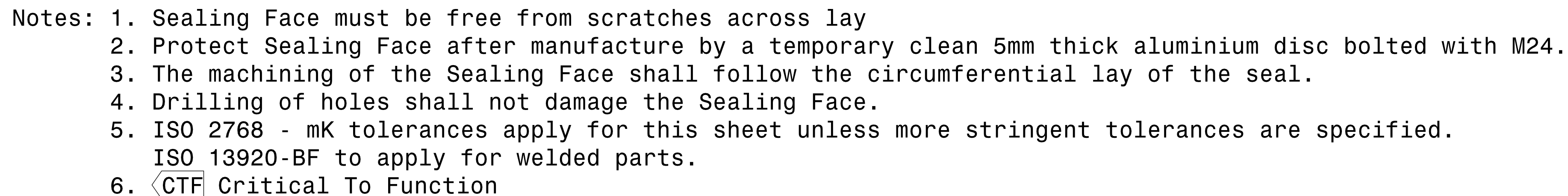
Part Number	Part reference	Qty	Material / Ref.	Drawing Number	Remarks
01	TCPH_SHELL_01	1	SS 304/304L	034338	
02	TCPH_SHELL_02	1	SS 304/304L	034338	
03	TCPH_SHELL_03	1	SS 304/304L	034338	
04	TCPH_SHELL_04	1	SS 304/304L	034338	
05	TCPH_VERTICAL_PLATE_01	1	SS 304/304L	034340	
06	TCPH_WALL_FLANGE_01	1	SS 304/304L	034344	
07	TCPH_VERTICAL_PLATE_02	1	SS 304/304L	034340	
08	TCPH_VERTICAL_PLATE_03	1	SS 304/304L	034340	
09	TCPH_CRYOPUMP_FLANGE_01	1	SS 304/304L	034345	
10	Deleted				
11	TCPH_OBLONG_PIPE	1	SS 304/304L	034348	
12	TCPH_PIPE_01_DN100	1	SS 304L; DN100; sch:10S; L:3420mm		
13	TCPH_LIFTING_PAD	3	SS 304/304L	034353	
14	TCPH_INNER_CYLIDER	1	SS 304/304L	034351	
15	TCPH_LEFT_RH_SOCKET	1	SS 304/304L	034343	
16	TCPH_RIGHT_RH_SOCKET	1	SS 304/304L	034343	
17	TCPH_BOTTOM_SOCKET	1	SS 304/304L	034349	
18	TCPH_BOTTOM_SOCKET_DEEP_01	1	SS 304/304L	034349	
19	TCPH_VACUUM_PIPE_DN150	1	SS 304L; DN150; sch: 40S; L:80mm		





ISOMETRIC VIEW  
Scale: 1:20


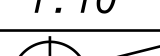
DRW DOC ID <b>Q4GHVF</b>			RELEASED BY ---		ITER Organization			 china EU india japan korea russia USA				
LINKED EVS PT ID <b>U2L8RU</b>			APPROVED BY <b>PETITPA</b>									
PBS TITLE <b>Cryostat &amp; VVPSS Cryostat Lower Cylinder</b>			CHECKED BY <b>BEAUDOS</b>		DRAWING TITLE <b>CR_LC_TCP_HOUSING_TYPE_A_DET DATUMS AND OVERALL DIMENSIONS</b>							
			CONTROLLED BY <b>VITUPIG</b>									
REV DATE <b>24 May 18</b>		PT MATURITY <b>CD</b>		PT VERSION <b>--F</b>								
SHEET SIZE <b>841x594</b>		SCALE <b>1:20</b>		PT STATUS <b>D</b>		DRAWN BY <b>VAUQUEJ</b>						
THIRD ANGLE PROJECTION 		NO. OF SHTS <b>08</b>		PBS 3 LEVELS		DRAWING NUMBER		<b>034445</b>		SHEET <b>02</b>	REVISION <b>--E</b>	DR STATUS <b>D</b>
				<b>24 CR_LC</b>								





DRW DOC ID			Q4GHVF			RELEASED BY			---			ITER Organization							
LINKED EV5 PT ID			U2L8RU			APPROVED BY			PETITPA										
PBS TITLE						CHECKED BY			BEAUDOS			DRAWING TITLE CR_LC_TCP_HOUSING_TYPE_A_DET RH FLANGE 1/2							
Cryostat & VVPSS Cryostat Lower Cylinder						CONTROLLED BY			VITUPIG										
REV DATE		PT MATURITY		PT VERSION		DRAWN BY													
24 May 18		CD		--F		VAUQUEJ													
SHEET SIZE		SCALE		PT STATUS															
841x594		1:10		D															
THIRD ANGLE PROJECTION						NO. OF SHTS			PBS 3 LEVELS			DRAWING NUMBER		SHEET		REVISION		DR STATUS	
						08			24 CR.LC			034445		03		-- E		D	



DRW DOC ID <b>Q4GHVF</b>			RELEASED BY ---			ITER Organization			 china RU india japan korea russia USA														
LINKED EV5 PT ID <b>U2L8RU</b>			APPROVED BY <b>PETITPA</b>			DRAWING TITLE <b>CR_LC_TCP_HOUSING_TYPE_A_DET</b> <b>RH FLANGE 2/2</b>																	
PBS TITLE <b>Cryostat &amp; VVPSS</b>			CHECKED BY <b>BEAUDOS</b>																				
Cryostat			CONTROLLED BY <b>VITUPIG</b>																				
Lower Cylinder			DRAWN BY <b>VAUQUEJ</b>																				
REV DATE <b>24 May 18</b>	PT MATURITY <b>CD</b>	PT VERSION <b>--F</b>																					
SHEET SIZE <b>841x594</b>	SCALE <b>1:10</b>	PT STATUS <b>D</b>																					
THIRD ANGLE PROJECTION						NO. OF SHTS <b>08</b>			PBS 3 LEVELS <b>24 CR LC</b>			DRAWING NUMBER <b>034445</b>			SHEET <b>04</b>			REVISION <b>--E</b>			DR STATUS <b>D</b>		

A

B

C

D

E

F

G

H

A

B

C

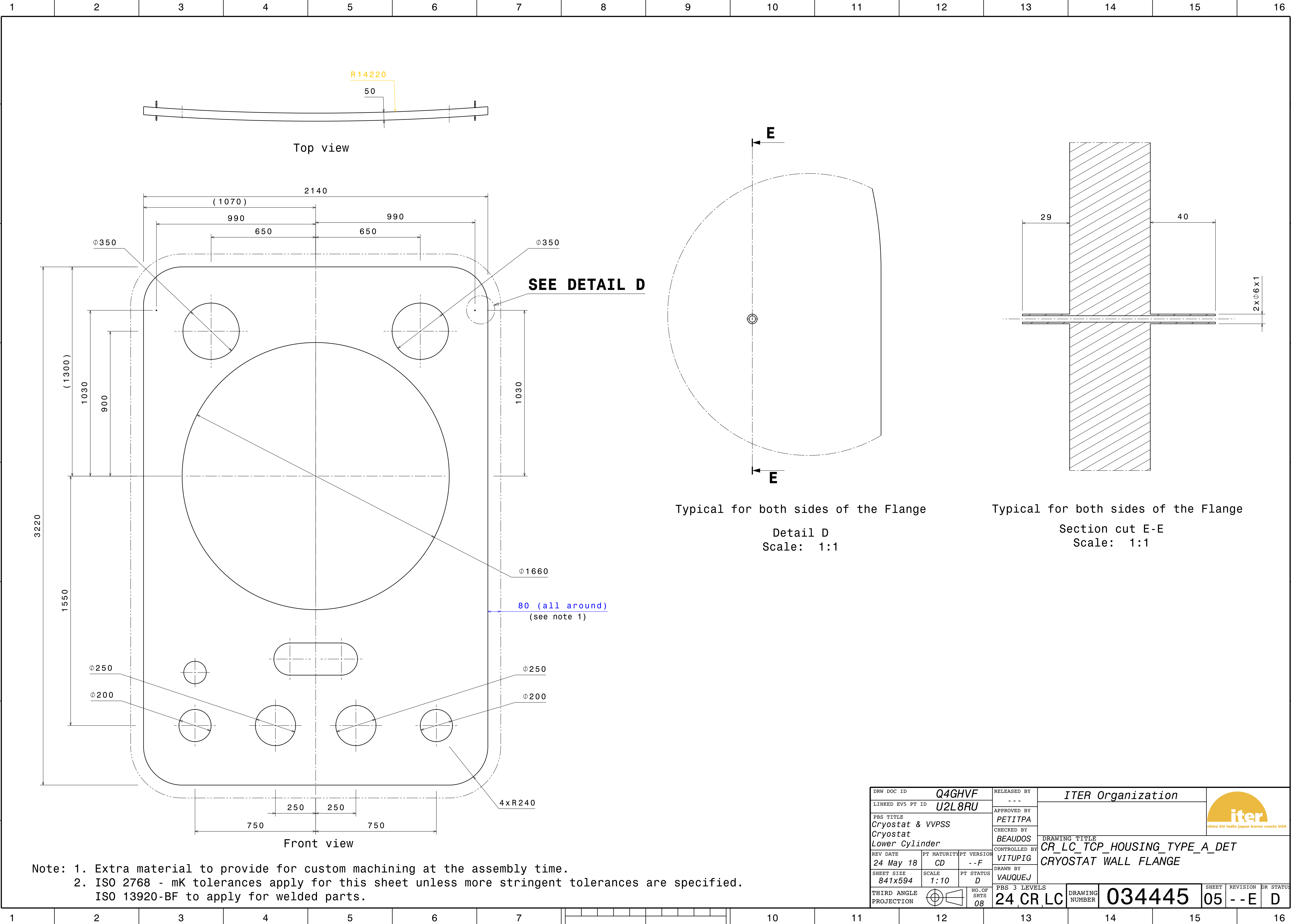
D



E

F

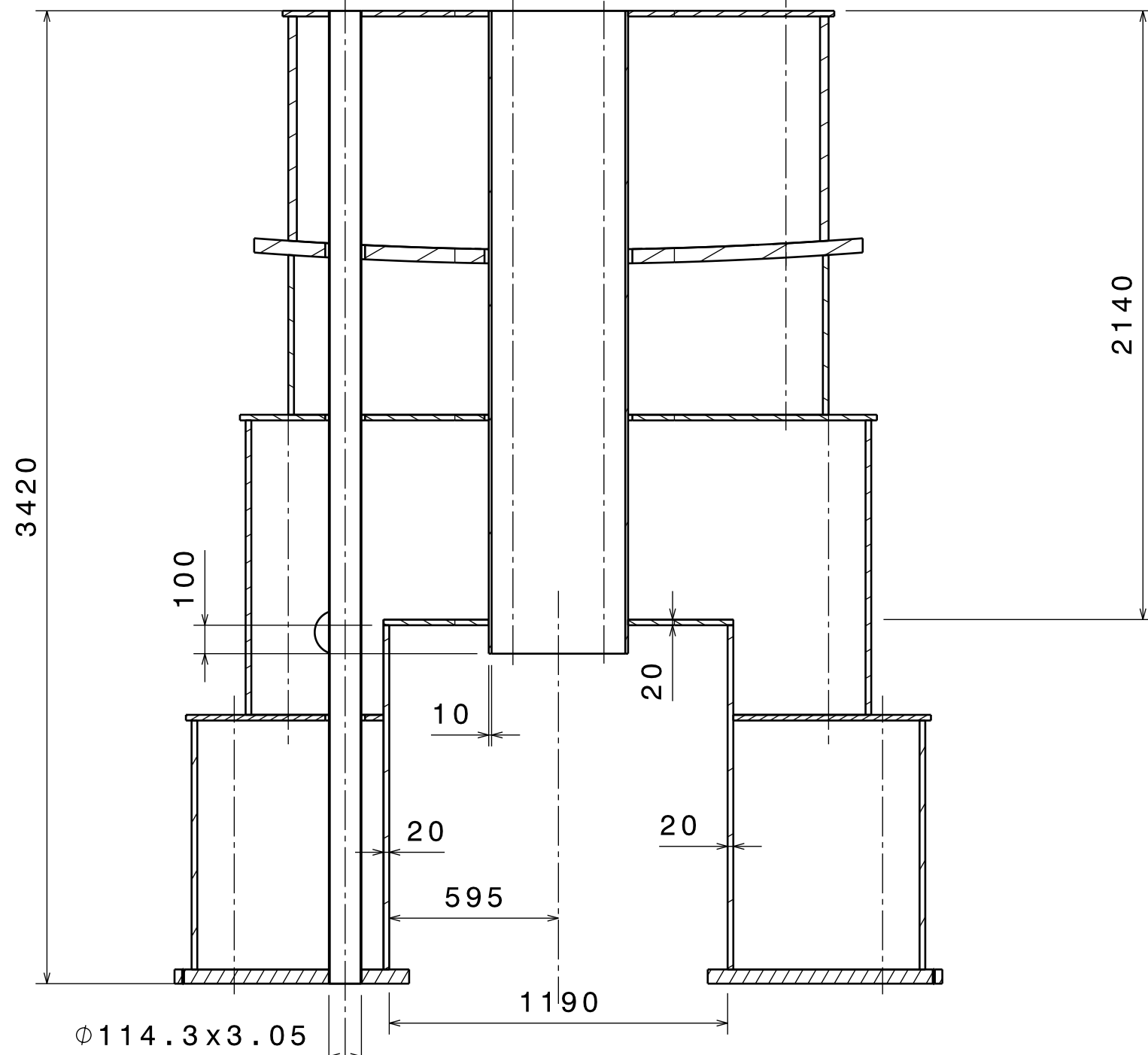
G

H

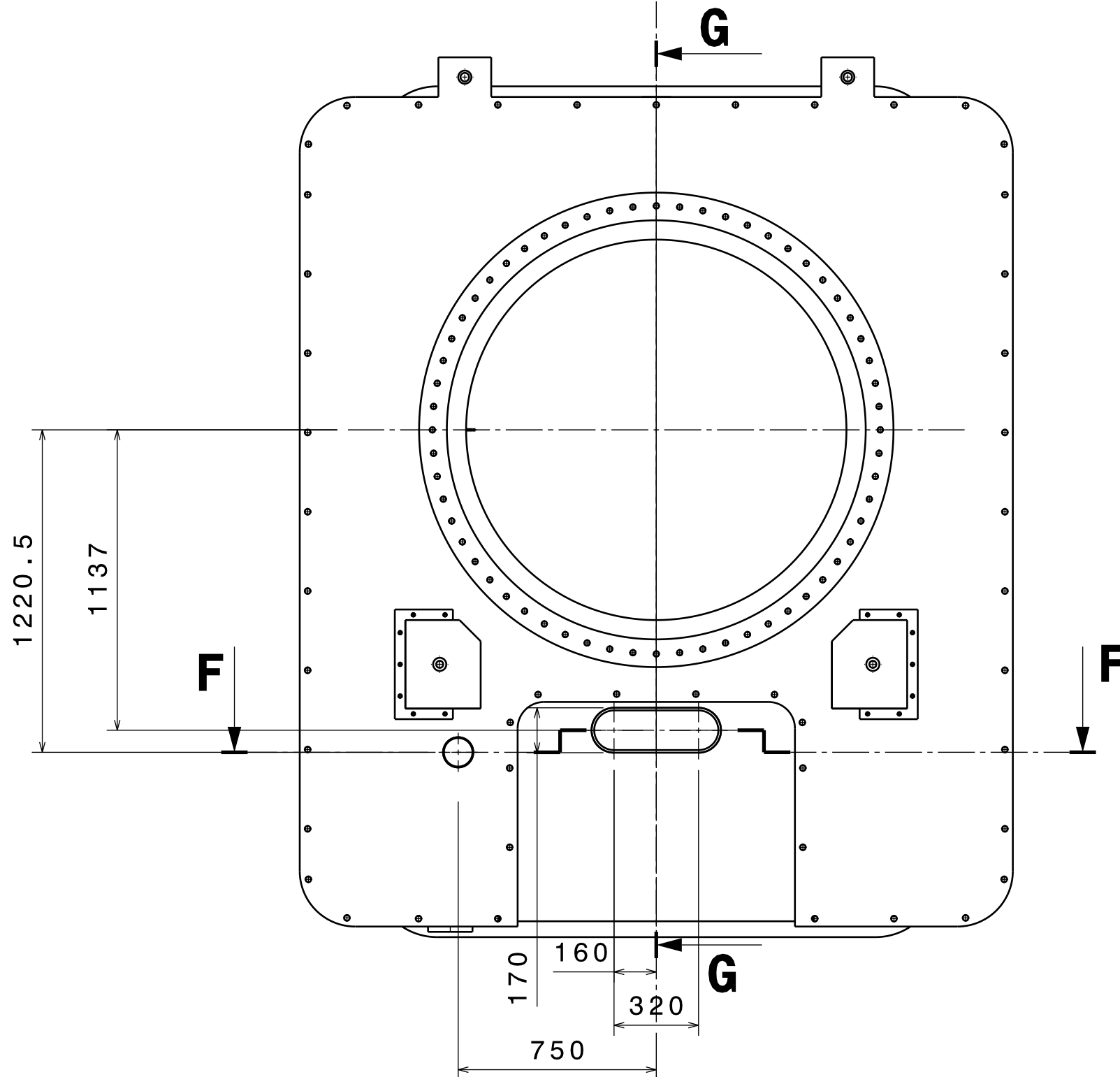


DRW DOC ID			Q4GHVF			RELEASED BY		ITER Organization				 china EU india japan korea russia USA						
LINKED EV5 PT ID			U2L8RU			---		<div>DRAWING TITLE</div> CR_LC_TCP_HOUSING_TYPE_A_DET CRYOSTAT WALL FLANGE										
PBS TITLE Cryostat & VVPSS Cryostat Lower Cylinder			APPROVED BY			PETITPA												
			CHECKED BY			BEAUDOS												
REV DATE		PT MATURITY		PT VERSION		CONTROLLED BY												
24 May 18		CD		--F		VITUPIG												
SHEET SIZE		SCALE		PT STATUS		DRAWN BY												
841x594		1:10		D		VAUQUEJ												
THIRD ANGLE PROJECTION					NO. OF SHTS		PBS 3 LEVELS		DRAWING NUMBER		034445		SHEET		REVISION		DR STATUS	
					08		24 CR LC				05		--E		D			

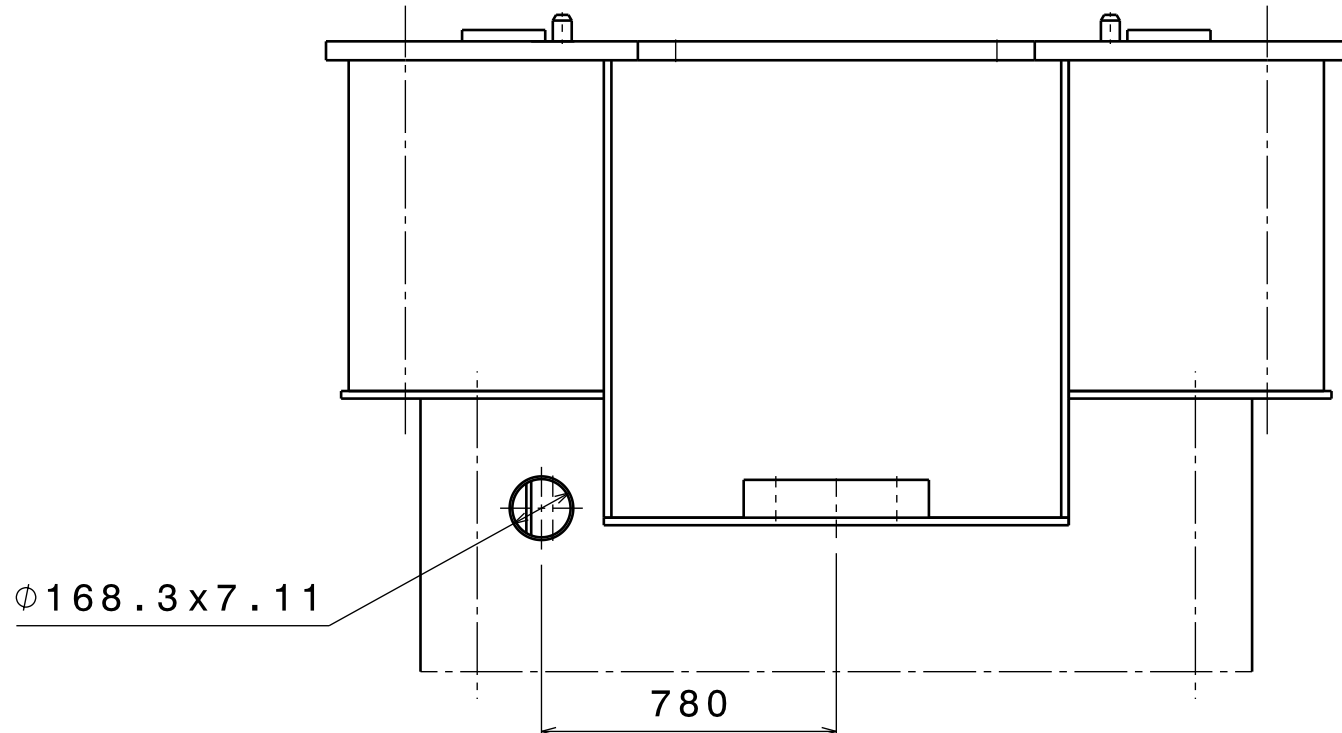




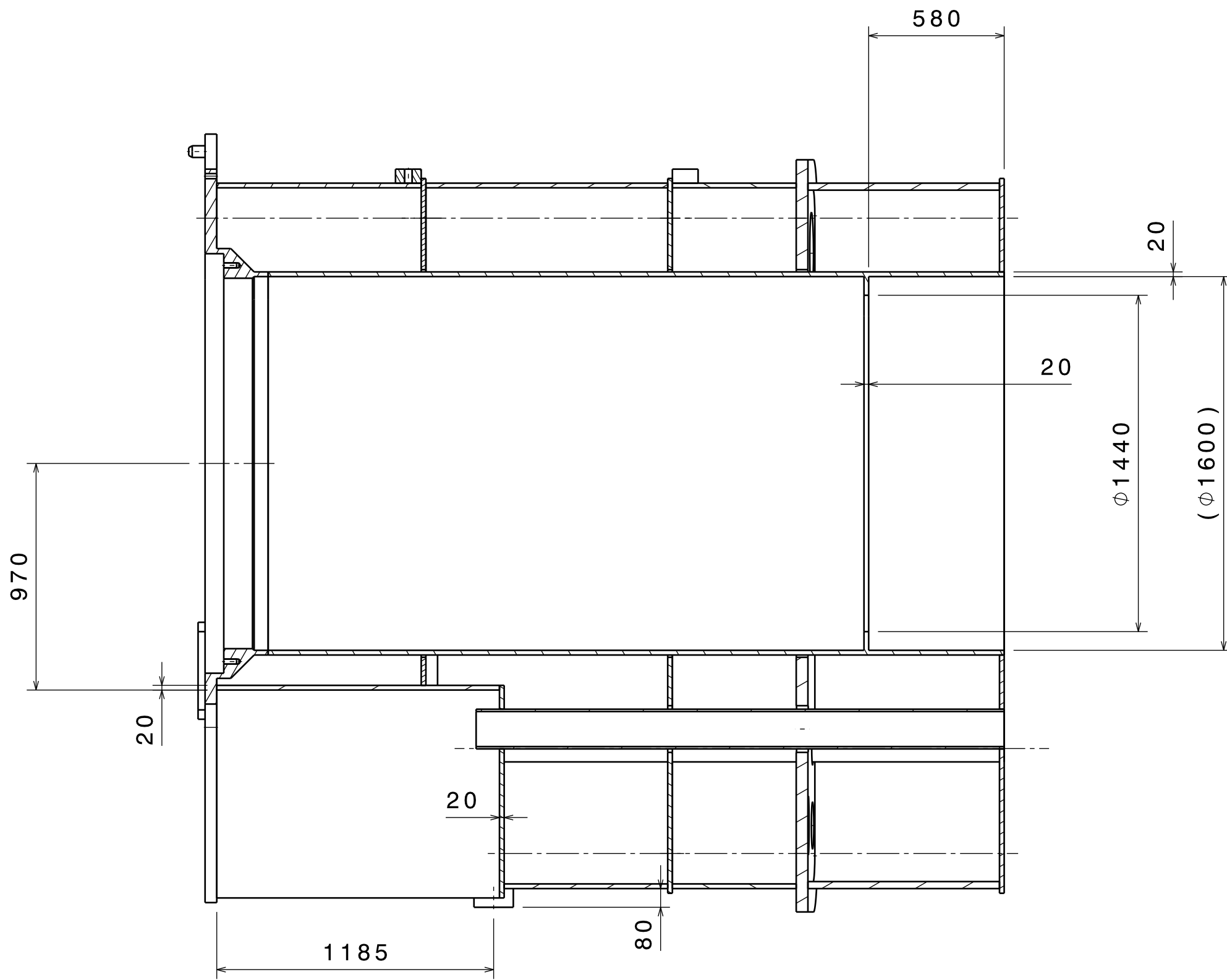
Section view F-F



Front view


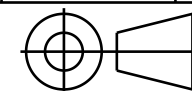


Bottom view



Section view G-G

Note: ISO 2768 - mK tolerances apply for this sheet unless more stringent tolerances are specified.  
ISO 13920-BF to apply for welded parts.

DRW DOC ID <b>Q4GHVF</b>			RELEASED BY ---		ITER Organization					
LINKED EV5 PT ID <b>U2L8RU</b>			APPROVED BY <b>PETITPA</b>							
PBS TITLE <b>Cryostat &amp; VVPSS Cryostat Lower Cylinder</b>			CHECKED BY <b>BEAUDOS</b>		DRAWING TITLE <b>CR_LC_TCP_HOUSING_TYPE_A_DET PENETRATIONS</b>					
REV DATE <b>24 May 18</b>			PT MATURITY <b>CD</b>					PT VERSION <b>--F</b>		
SHEET SIZE <b>841x594</b>			SCALE <b>1:20</b>					PT STATUS <b>D</b>		
			DRAWN BY <b>VAUQUEJ</b>							
THIRD ANGLE PROJECTION					NO. OF SHTS <b>08</b>		PBS 3 LEVELS <b>24 CR_LC</b>		DRAWING NUMBER <b>034445</b>	
							SHEET <b>06</b>		REVISION <b>--E</b>	
									DR STATUS <b>D</b>	



A

B

C

D

E

F

G

H

A

B

C

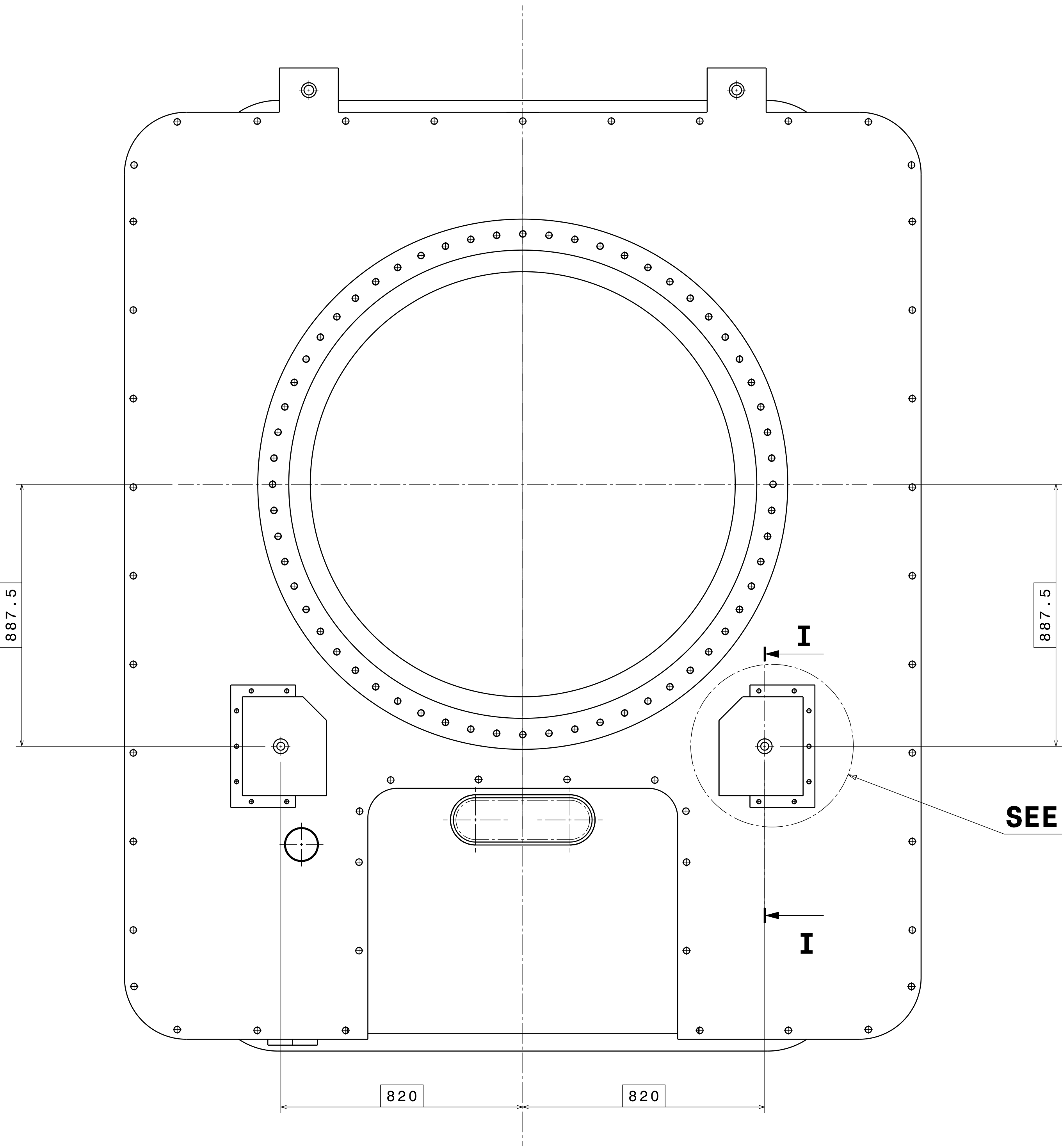
D

E

F

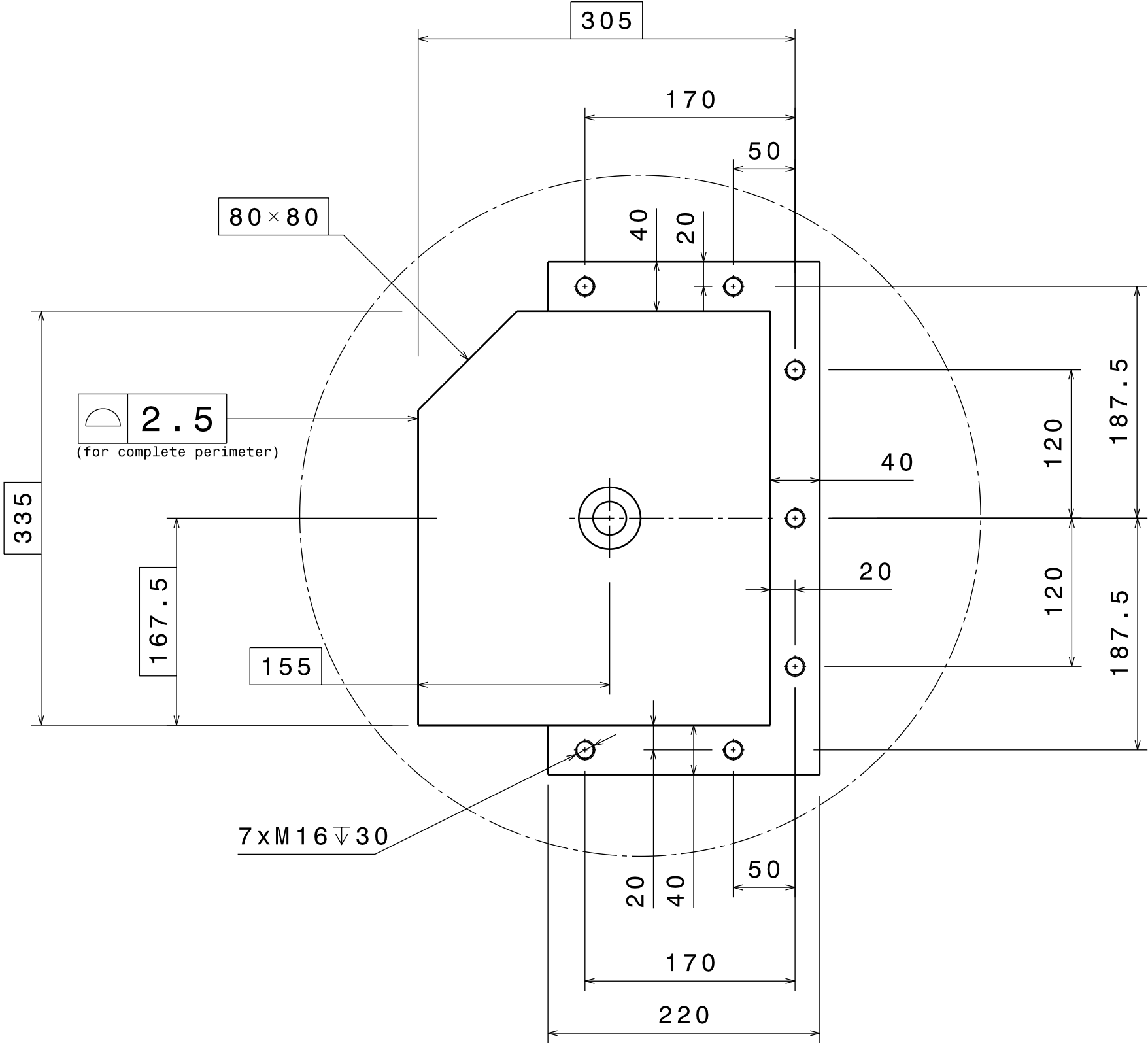
G

H

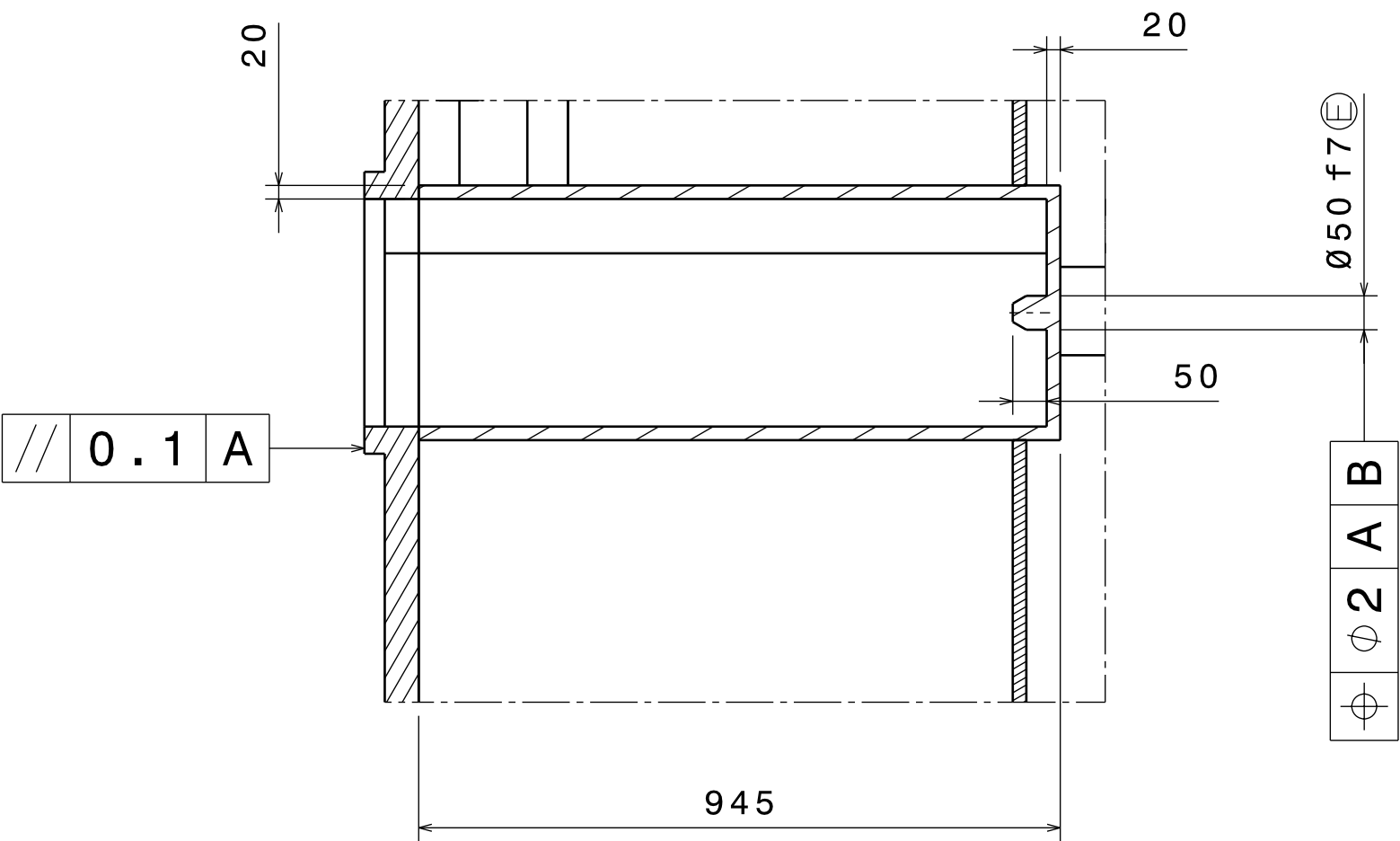


Front view

SEE DETAIL H


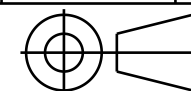


Typical for this socket and its symmetrical  
Detail H  
Scale: 1:4



Typical for this socket and its symmetrical  
Section view I-I

Note: ISO 2768 - mK tolerances apply for this sheet unless more stringent tolerances are specified.  
ISO 13920-BF to apply for welded parts.

DRW DOC ID Q4GHVF			RELEASED BY ---		ITER Organization				 china EU india japan korea russia USA			
LINKED EV5 PT ID U2L8RU			APPROVED BY PETITPA									
PBS TITLE Cryostat & VVPSS Cryostat Lower Cylinder			CHECKED BY BEAUDOS		DRAWING TITLE CR_LC_TCP_HOUSING_TYPE_A_DET RH SOCKETS							
			CONTROLLED BY VITUPIG									
REV DATE 24 May 18		PT MATURITY CD	PT VERSION --F	DRAWN BY VAUQUEJ								
SHEET SIZE 841x594		SCALE 1:10	PT STATUS D									
THIRD ANGLE PROJECTION				PBS 3 LEVELS		DRAWING NUMBER		034445		SHEET 07	REVISION --E	DR STATUS D
				24 CR LC								

6